

## Fibromyalgia: Is It Real?

This introductory article is the first of a series of three papers on fibromyalgia. The subsequent two papers will focus on evidence-based treatments and newer emerging therapies to improve function and hope.

Gordon D. Ko, MD, CCFP(EM), FRCPC, FABPMR, FABPM

Fibromyalgia syndrome (FMS) has generated considerable controversy in the past 20 years. The hallmark characteristic is chronic widespread pain. This is often accompanied by fatigue, non-restorative sleep, mood disorders and somatic symptoms. The challenges are multiple with an unknown pathogenesis, variable symptoms, unpredictable treatment responses and high prevalence rates (reported to be 2-3% in Canada, with females nine times more commonly affected than males).<sup>1</sup> The lack of an objective diagnostic laboratory test and of a gold standard of treatment further complicates management. This has resulted in physician insecurity in managing such patients. Medical school education regarding pain mechanisms and management is limited and extends to the postgraduate level as well.<sup>2</sup> This results in FMS being a frequently neglected, poorly understood and treated condition.

### Scientific Basis for Fibromyalgia

Recent neurophysiologic studies including functional MRI (studying dynamic brain activity in response to pain stimuli) have provided validation of reported widespread pain in the absence of an identifiable physical abnormality (Figures 1 and 2).<sup>3-6</sup> These findings are currently available in the research setting only, and not yet available for general community use in diagnosing and following FMS patients.

Abnormalities in pain processing have been identified at various levels in the peripheral, central, and sympathetic nervous systems, as well as the hypothalamic-pituitary-adrenal (HPA) axis stress-response system.<sup>3-8</sup> Documented abnormalities include evidence of peripheral sensitization (pressure and thermal hyperalgesia), central sensitization (dynamic mechanical allodynia, and pinprick hyperalgesia with wind-up phenomenon and after-sensation), increased levels of substance P, glutamate and nerve growth factor in

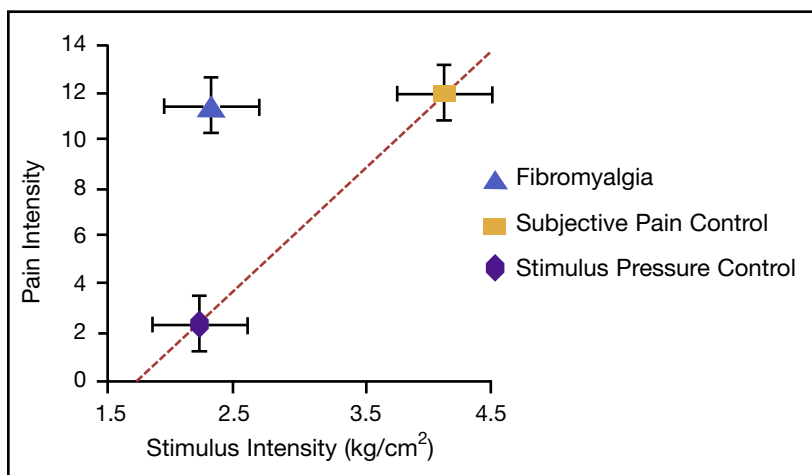


Figure 1: Pain Intensity vs. Stimulus Intensity<sup>3</sup>

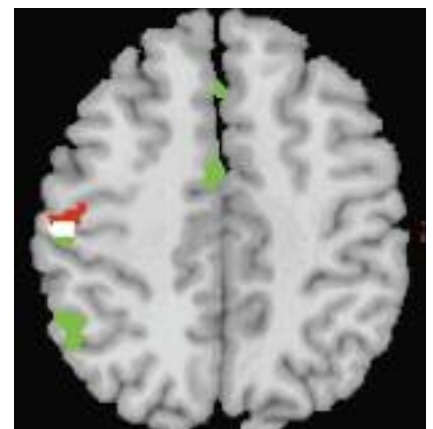


Figure 2: fMRI: Enhanced responses in somatosensory primary and secondary cortex, insula, putamen, and cerebellum<sup>3</sup>

Table 1

## 1990 ACR Classification Criteria<sup>13</sup>

History of widespread pain > three months

- Above and below waist
- Left and right side
- Must include axial spine

Pain in 11 of 18 tender points, palpation pressure < 4 kg

- Suboccipital muscle insertions
- Low cervical (C5 – C6 transverse processes)
- Upper middle trapezius muscles
- Supraspinatus origins (medial upper scapula)
- 2nd ribs (near costochondral junction)
- Lateral epicondyles (2 cm distal to them)
- Gluteal muscles (upper outer quadrant)
- Greater trochanters (2 cm posterior)
- Medial fat pad of knees (above joint line)

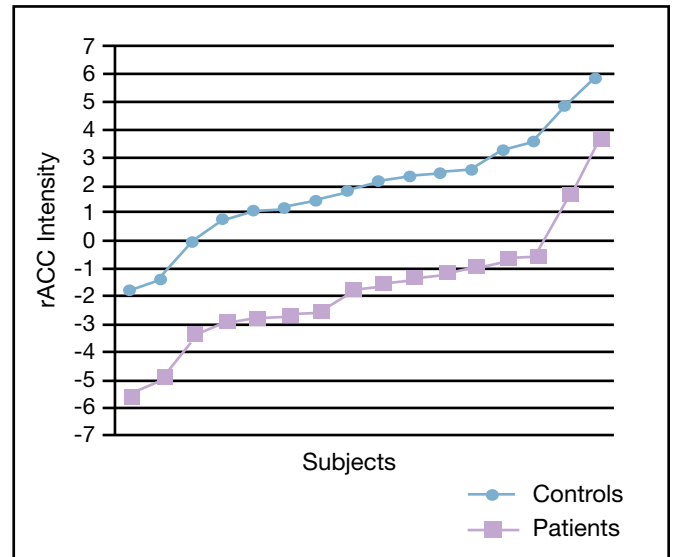


Figure 3: Intensity of Activation in rACC (the Origin of DNIC) During Provoked Pain<sup>4</sup>

the cerebrospinal fluid, and loss of descending noxious inhibitory control, or DNIC, (Figure 3). Recent research also points to interactions between peripheral, central bulbo-spinal and central cortical mechanisms with documentation on functional MRI and SPECT scan imaging of the CNS.<sup>6,7</sup>

Genetic factors may predispose some individuals to a dysfunctional stress response via the HPA-axis.<sup>8</sup> The odds risk ratio is 8.5 for first degree relatives.<sup>9</sup> In addition, there is epidemiological evidence that early life adversity such as the death of a mother, being in institutional care or family financial hardships are linked to chronic widespread pain in adult life.<sup>10</sup> These numerous interacting sensitizing factors may be the setting in which an inciting event such as a viral illness, accident (the odds are 13 times greater after a motor vehicle accident neck injury vs. a leg fracture),<sup>11</sup> or emotional trauma (reported in 31% of patients),<sup>12</sup> then becomes the trigger for FMS in some patients.

## Diagnosing FMS in Clinical Practice

FMS should be positively diagnosed and no longer be seen as a diagnosis of exclusion. The 1990 American College of Rheumatology (ACR) diagnostic criteria were developed for research purposes and not purely as a diagnostic instrument (Table 1).<sup>13</sup> This older criteria require the presence of widespread pain for at least three months duration with the presence of at least 11 of 18 tender points in designated areas (Table 1). Tender points, the only physical examination finding used to help diagnose FM, indicate an overall reduction in pain threshold. They do not represent localized soft tissue pathology, and have been criticized for reliance on subjective interpretation. New ACR criteria are currently being reviewed to eliminate overreliance on tender points in favour of incorporating other clinically meaningful symptoms (sleep disturbance, fatigue, cognitive impairment) and somatic symptoms (depression, headache, irritable bowel) frequently present in FMS patients.<sup>14</sup> An about to be validated tool that the author has found to be very helpful in screening for FMS is the Fibromyalgia Moldofsky Questionnaire. A score > 11 is suggestive of FMS.

As there is no single routine lab test that confirms a diagnosis of FMS, it is recommended that only minimal testing, including a complete blood count (CBC),



**Dr. Ko** is Medical Director, Psychiatry Fibromyalgia Integrative Treatment Clinics at Sunnybrook Health Sciences Centre, University of Toronto, and the Canadian Centre for Integrative Medicine, Markham, Ontario; and Assistant Professor, Department of Medicine, University of Toronto, Toronto, Ontario



### References

1. McNally JD, Matheson DA, Bakowsky VS: The Epidemiology of Self-reported Fibromyalgia in Canada. *Chronic Dis Can.* 2006(1);27:9-16.
2. Hunter J, Watt-Watson J, McGillion M, et al: An Interfaculty Pain Curriculum: Lessons Learned from Six Years Experience. *Pain* 2008;140(1):74-86
3. Gracely RH, Petzke F, Wolf JM, et al: Functional Magnetic Resonance Imaging Evidence of Augmented Pain Processing in Fibromyalgia. *Arthritis Rheum.* 2002;46(5):1333-1343.
4. Jensen KB, Kosek E, Petzke F et al: Evidence of Dysfunctional Pain Inhibition in Fibromyalgia Reflected in rACC During Provoked Pain. *Pain* 2009;144(1-2):95-100
5. Julien N, Goffaux P, Arsenaault P, et al: Widespread Pain in Fibromyalgia is Related to a Deficit of Endogenous Pain Inhibition. *Pain* 2005;114(1-2):295-302.
6. Staud R, Nagel S, Robinson ME, et al: Enhanced Central Pain Processing in Fibromyalgia Patients is Maintained by Muscle Afferent Input: A Randomized, Double-blind, Placebo-controlled Study. *Pain* 2009;145(1-2):96-104.
7. Goffaux P, de Sousa JB, Potvin S, et al: Pain Relief Through Expectation Supersedes Descending Inhibitory Deficits in Fibromyalgia Patients. *Pain* 2009;145(1-2):18-23.
8. McBeth J, Silman AJ, Gupta A, et al: Moderation of Psychosocial Risk Factors Through Dysfunction of the Hypothalamic-Pituitary-Adrenal Stress Axis in the Onset of Chronic Widespread Musculoskeletal Pain: Findings of a Population-based Prospective Cohort Study. *Arthritis Rheum.* 2007;56(1):360-71.
9. Arnold LM, Hudson JL, Hess EV et al: Family Study of Fibromyalgia. *Arthritis Rheum* 2004;50(3):944-52.
10. Jones GT, Power C, Macfarlane GJ: Adverse Events in Childhood and Chronic Widespread Pain in Adult Life: Results From the 1958 British Birth Cohort Study. *Pain* 2009;143(1-2):92-6.
11. Buskila D, Neumann L, Vaisberg G et al: Increased Rates of Fibromyalgia Following Cervical Spine Injury. A Controlled Study of 161 Cases of Traumatic Injury. *Arthritis Rheum* 1997;40(3):446-52.
12. Bennett RM, Jones J, Turk DC et al: An Internet Survey of 2596 People with Fibromyalgia. *BMC Musculoskel Disord* 2007;8:27-38.
13. Wolfe F, Smythe HA, Yunus MB, et al: The American College of Rheumatology 1990 Criteria for the Classification of Fibromyalgia. Report of the Multicenter Criteria Committee. *Arthritis Rheum.* 1990;33(2):160-72.
14. Wolfe F, Clauw DJ, Fitzcharles MA et al: American College of Rheumatology Preliminary Diagnostic Criteria for Fibromyalgia and Measurement of Symptom Severity. *Arthritis Care Res.* 2010;62(5):600-10.
15. Hughes G, Martinez C, Myon E et al: The Impact of a Diagnosis of Fibromyalgia on Health Care Resource Use by Primary Care Patients in the UK: An Observational Study Based on Clinical Practice. *Arthritis Rheum.* 2006;54(1):177-183.